

IF PRISON WALLS COULD SPEAK



HOST INFORMATION PACK

2021/22

We would love to partner with your church to stage a performance of *If Prison Walls Could Speak* as part of our UK tour. Don't worry if you've never hosted a night of Christian theatre before: In this pack we will show that it's **easier and cheaper than you might think** to host one of our performances.

THE PROJECT

If Prison Walls Could Speak is a brand new piece of live theatre by Artless, developed in partnership with **Release International**. The production began as a reaction to the 2019 Foreign Office Report into Christian Persecution, and the startling statistic that 250,000,000 Christians are currently living under persecution. We wanted to bring the story of the underground church to a modern UK audience who may not be aware of the faithful suffering faced by Christians across the world, whilst offering non-believers a challenging true story of the relevant and practical outliving of the Christian faith.

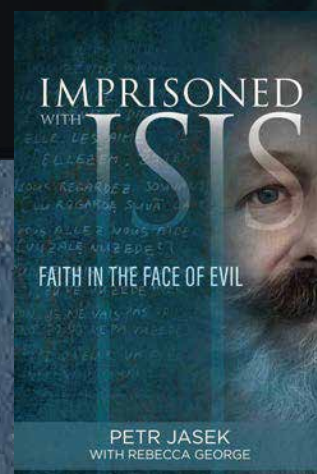
ABOUT THE PLAY

The play is a one-man hybrid multimedia performance featuring immersive video projection and sound.

Based on the book *Imprisoned With Isis: Faith in the Face of Evil* the play tells the true life story of Petr Jasek, who in 2015, was imprisoned for his work aiding the persecuted church in Sudan. Charged as a spy and forced into horrifying prison conditions,

If Prison Walls Could Speak is a powerful story of faith under fire. It is a story of corruption and espionage as Petr faces torturers, Isis fighters and the full weight of a crooked legal system on his path to freedom. Drawing from the great cloud of witnesses and testimonies from persecuted Christians around the world, this production sheds light on the wider struggles of the underground church and serves as a rallying cry for prayer and intercession.

If Prison Walls Could Speak is a dramatic and compelling testimony of God's faithfulness and the unstoppable nature of His kingdom.



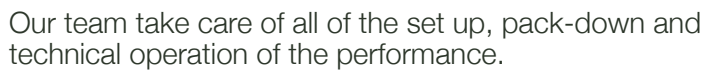
DURATION **1 hr 40mins** (plus interval)

AGE GUIDANCE **11+**

BOOKING FEE **£580*** + travel

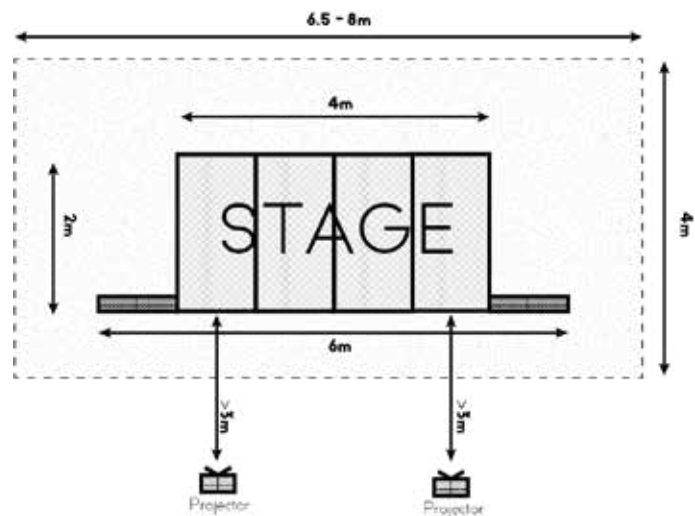
*Exclusive subsidised price for churches & Christian outreach events. We strongly advise churches to ticket their event to offset this cost. We have found that performances that are ticketed at a minimum of £5 tend to attract a larger and more invested audience.

Artless touring productions feature professional stage lighting, PA and temporary a staging platform that are designed to fit most church layouts.

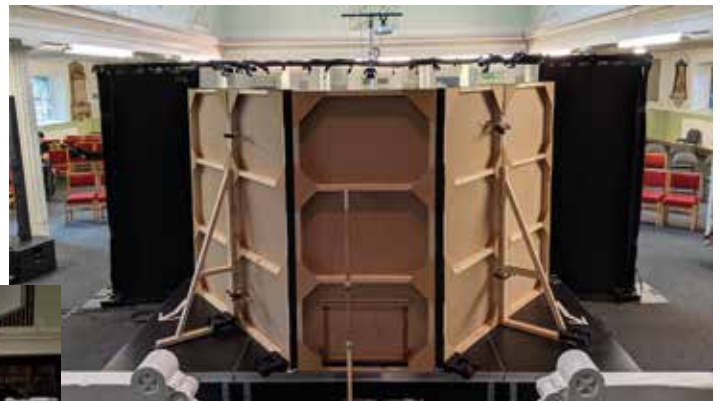


We also require space for our projectors (around 3m from stage).

If your regular church meeting space does not have enough room, there is always the option of hiring a local school/village hall, we can guide you through the process if you have not done that before.



- ▶ Access to at least 4 mains power sockets
- ▶ Access and parking for our van (long wheelbase)
- ▶ Ability to fully darken the room
(we have solutions if current curtains/blinds are ineffective)

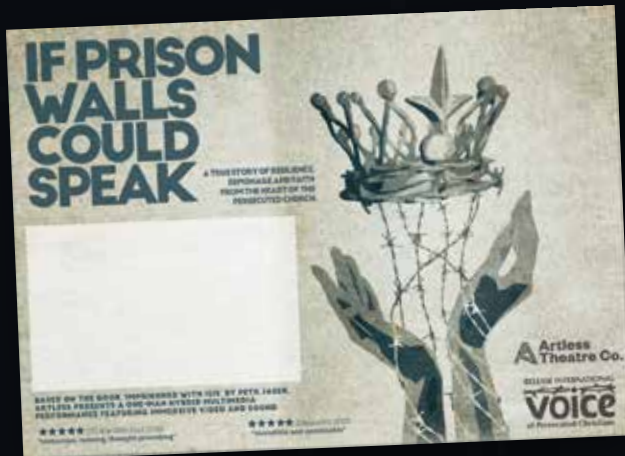


MARKETING THE SHOW

Each performance is a co-venture between Artless and our host churches, and we have seen many churches use a night of theatre to further their links with the local community.

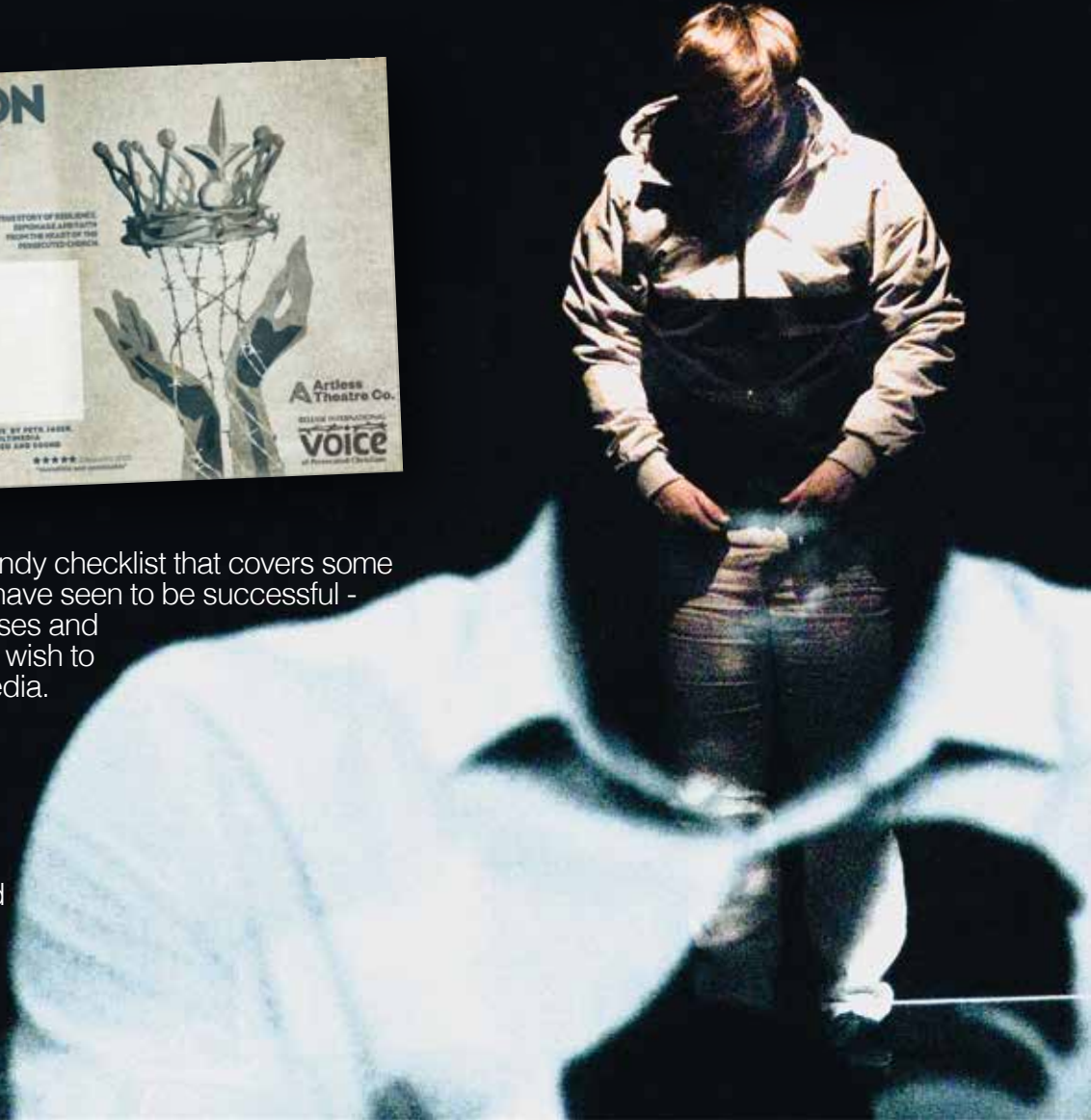
Getting people to come to a show does take work, however it is so rewarding seeing an evangelistic church event full of non-members. We want to make the process as simple as possible.

Upon booking we will supply marketing materials in the form of physical A3 posters in 2 styles and a customised poster/flyer to be distributed digitally/printed on your end.



We have also put together a handy checklist that covers some of the marketing strategies we have seen to be successful - we can also supply press releases and promotional photographs if you wish to advertise through your local media.

Once booked in your date will be featured on both Artless and Release International websites and social media



CORONAVIRUS CONTINGENCY

We are excited to get back on the road and tour *If Prison Walls Could Speak*, and we believe that God will move powerfully through this live project after 2 years of drama ministry taking place solely online.

While touring, we will be following the compulsory COVID-19 working guidelines and we will work with you to help make your event both safe and covid-compliant.

In the event of the UK being placed into another lockdown (or local lockdown in your locality) we will honour your booking with an exclusive live online performance of *If Prison Walls Could Speak* (at a slightly reduced rate due to lower staging costs).

Our policy is: if we are legally allowed to tour, the event will go ahead.



We plan to tour this production to 100 churches in 2021/22 across the United Kingdom. We are aiming to tour the regions (left) in week long stints. Our headquarters are in Essex, and as a result we will be concentrating on the southeast in 2021/ early 2022.



Our touring team - (left to right) **Chris Poch** Director & Performer, **Jon Maltz** Director & Technical designer, **Charlie Mann** Production Manager & Operations, **Jedd Walsh** Technical Assistance



Artless have been touring theatrical productions to venues across the UK since 2015, providing events for churches that are springboard for evangelism and outreach. We have been honoured to perform for HM Queen Elizabeth II and have been featured on BBC ONE and Premier Christian Radio. We are a National Mission Partner of Scripture Union England & Wales and a registered charity (no. 1172501).

Our mission is to provide an opportunity for Christians and particularly non-Christians to encounter the gospel through high quality theatre & performance.

COSTS

We aim to make our productions as affordable and accessible as possible for churches. Our booking fee for *If Prison Walls Could Speak* is subsidised by faithful givers and targeted fundraising by Artless. We have also committed to give £80 to Release International from every booking fee.

As mentioned previously, we strongly advise churches to set a ticket price for the production, not only to help offset the cost of hosting, but also imbibe a sense of value and exclusiveness to the occasion.

You are absolutely welcome to not set a ticket price, however we have found that events that are advertised as free often fail to attract a crowd as they do not capture the imagination of potential audiences. Even a nominal ticket fee sets the expectation for an evening of professional and high-quality theatre.

We do not, however, wish a performance to be a 'money-making' venture for churches. This is primarily a vehicle for the gospel to be shared.

Artless booking fee	£580
Church led leaflet printing (optional)	£25
Artless travel costs (average)	£40
Total costs incurred (average)	£645
80 tickets sold at £5 (average)	£400
Overall/ final cost to Church	£245

An example budget for a typical performance, where £25 has been spent printing leaflets and 80 tickets have been sold at £5 each.

WHAT NEXT?

- ▶ If you wish to pursue hosting a performance of *If Prison Walls Could Speak*, get in touch and we will send a booking form for you to complete.
- ▶ We will then secure a date that suits you within our tour schedule.
- ▶ Once booked you will receive personalised A3 posters & the digital leaflet template if you wish to print yourself/ advertise online
- ▶ We will promote your event via our social media/website and any subsequent national advertising will point people towards their local event.
- ▶ On the day of performance we will need access to the space 4+ hours before start time and a space to park our van (LWB).
- ▶ We can design the event around your needs which could include a short presentation from a Release International representative.
- ▶ After the performance we will invoice £580 + travel.
- ▶ Depending on our touring schedule we may require overnight hosting for our team members (max 4), there are a couple options for this which we can discuss further.

(To keep our fee low we also do not factor in accommodation into our touring costs. As a result we rely on the hospitality of our host churches for accommodation. This is arranged on a venue-by-venue basis and would require a conversation between our team and your church. We do however tour with sleeping bags and camp beds and are more than happy to 'rough it' even in the church premises).



For more information or to book email office@artless.org.uk or call Chris: 07837791128